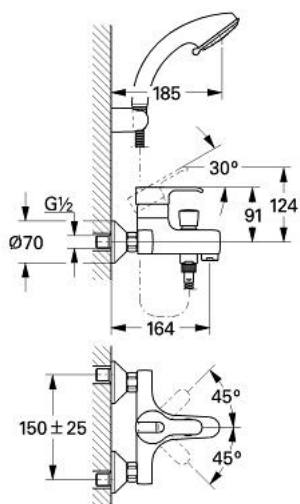


33 509 000 EURODISC EINHAND-WANNENBATTERIE, 1/2"



PRODUKTBESCHREIBUNG

- Farbe: chrom
- Wandmontage
- GROHE SilkMove 46 mm Keramikkartusche
- mit Temperaturbegrenzer
- variabel einstellbare Mengenbegrenzung
- einstellbare Mindestmenge 2,5 l/min
- automatische Umstellung: Wanne/Brause
- Auslauf mit Mousseur
- integrierte Rückflussverhinderer im Brauseabgang 1/2"
- S-Anschlüsse
- mit Relaxa-Brausegarnitur:
- bestehend aus:
- Relaxa plus Exquisit-Handbrause (28 215)
- Handbrausehalter (28 605)
- Relaxaflex Brauseschlauch 1.500 mm (28 151)
- Eigensicher gegen Rückfließen
- GROHE Long-Life Oberfläche

Exploded view diagram of a shower head assembly. The diagram shows the following components and their assembly sequence:

- 1**: Shower head body with a spray pattern of 1.1.
- 2**: Main shower head body.
- 3**: Upper decorative cap.
- 4**: Upper decorative cap with a screw.
- 5**: Lower decorative cap.
- 6**: Lower decorative cap with a screw.
- 7**: Lower decorative cap with a screw.
- 8**: Lower decorative cap with a screw.
- 9**: Lower decorative cap with a screw.
- 10**: Lower decorative cap with a screw.
- 11**: Lower decorative cap with a screw.
- 12**: Lower decorative cap with a screw.
- 12.1**: Lower decorative cap with a screw.
- 12.2**: Lower decorative cap with a screw.
- 13**: Lower decorative cap with a screw.
- 14**: Lower decorative cap with a screw.
- 15**: Lower decorative cap with a screw.

Additional labels include 1.1, 2.1, 5.1, 6.1, 6.2, 7.1, 10.1, and 11.1.

- 1: Hebel (Bestell-Nr. 46183000)
- 1.1: Abdeckkappe (Bestell-Nr. 46184000)
- 2: Kartusche (Bestell-Nr. 46048000)
- 2.1: Dichtungsset (Bestell-Nr. 46209000)
- 3: Kappe (Bestell-Nr. 46242000)
- 4: Temperaturbegrenzer (Bestell-Nr. 46308000)
- 5: Anschlußverschraubung, 1/2" (Bestell-Nr. 45044000)
- 5.1: O-Ring Ø15 x Ø2 (Bestell-Nr. 0311900M)
- 6: S-Anschluss (Bestell-Nr. 12075000)
- 6.1: Dichtung (Bestell-Nr. 0138600M)
- 6.2: Rosette (Bestell-Nr. 0221000M)
- 9: Mousseur (Bestell-Nr. 13927000)
- 7.1: Siebeinsatz, Mousseur M28x1 (Bestell-Nr. 45029000)
- 8: Umstellung (Bestell-Nr. 08915000)
- 9: Umstellknopf (Bestell-Nr. 46007000)
- 10: Brausenippel (Bestell-Nr. 45480000)
- 10.1: O-Ring Ø21 x Ø2 (Bestell-Nr. 0599900M)
- 11: Rückflussverhinderer (Bestell-Nr. 45481000)
- 12: Handbrause 2 Strahlarten (Bestell-Nr. 28215000)
- 12.1: Sieb (Bestell-Nr. 0700200M)
- 13: Brauseschlauch (Bestell-Nr. 28151000)
- 14: Wandbrausehalter (Bestell-Nr. 28605000)
- 15: Verlängerung 3/4", 20 mm (Bestell-Nr. 0713000M)*

*Sonderzubehör